

CryptoSwift®

eCommerce Server Acceleration



Secure eCommerce Acceleration

Recognized as the industry standard for secure acceleration, CryptoSwift® is the ideal solution for organizations and businesses implementing SSL and other security protocols for their eCommerce applications and secure Web sites.

Today's businesses must integrate security protocols into their eCommerce infrastructure to protect customer information and privacy. The most common security protocol is Secure Sockets Layer (SSL). However, SSL consumes large amounts of the Web server's processing power due to the massive cryptographic computations that take place when a secure session is initiated. If many secure sessions are initiated simultaneously, then the Web server quickly becomes overburdened. The results are slow response times, dropped connections, and failed transactions. As customer orders begin pouring in, success will depend on whether that site's Web server can quickly handle each and every secure transaction, making the online customer's experience efficient and convenient.

CryptoSwift offloads and accelerates the public-key cryptographic functions of SSL and other widely used security protocols from the Web server's CPU. This results in a dramatic improvement to the overall performance of the Web server – CryptoSwift lowers CPU utilization, freeing up the server to perform other tasks. In addition, the SSL acceleration provided by CryptoSwift increases throughput and speeds up the delivery of Web pages.

Key Benefits:

- Accelerates secure eCommerce transactions
- Ensures Web server performance
- Enables high throughput and fast response times
- Easily installs as a PCI card or as an external module
- Integrates with cryptographic developer tool kits and secure applications

CryptoSwift offers flexibility and scalability to UNIX, Windows, and other environments. Rated from 200, 400 and 600 new sessions per second, multiple CryptoSwift PCI cards can easily be installed in each server as needed to handle large client loads. The CryptoSwift EN, an external rack-mountable solution, is also available to allow for the flexibility of connecting multiple servers to a single acceleration source. The CryptoSwift EN is rated at 600, 1,000, and 2,000 new sessions per second.

For more information on CryptoSwift, visit our Web site at www.rainbow.com/cryptoswift, or contact a Rainbow office nearest you.

Specification



CryptoSwift EN™

CryptoSwift EN has a standard rack mount 4U chassis, measuring 7" H x 17.062" W x 16" D and weighing 30 pounds.



CryptoSwift PCI

Flexible and scalable for UNIX, Windows and other environments.

Product Compatibility

Operating Systems

- AIX 4.3.2, 4.3.3
- BSDi 3.0, 4.0
- FreeBSD 4.1
- HP/UX 10.20, 11.00
- Linux kernel 2.2.x, 2.4
- SUN/Solaris 2.6, 2.7, 2.8
- WinNT 4.0 Service Pack 3 or later
- Windows 2000

APIs and Tool Kits

- Entrust File Toolkit
- Microsoft CryptoAPI 1.0, 2.0
- OpenSSL/SSLeay
- PKCS#11 v2.01
- RSA BSAFE

Web Servers

- Apache Web Server
- C2Net Stronghold
- iPlanet Certificate

Management Server

- iPlanet Directory Server
- iPlanet Web Server
- Microsoft IIS
- Netscape Enterprise Server

Protocols Supported

- SSL 2.0, 3.0 (Secure Sockets Layer)
- TLS 1.0
- SET (Secure Electronic Transactions)
- SSH (Secure Shell)

Electrical Interface

- PCI 2.1 (CryptoSwift PCI), 3.3 volts and 5.0 volts

Cryptographic Functions

- Modular exponentiation functions: DH, DSA, RSA
- RSA Public Key with CRT key lengths: 384-bit to 4096-bit
- RSA private key with CRT performance: 4.95ms/operation at 1024-bit
- Random Number Generation: up to 4,096 Bytes/command
- Random Number Generation: 18,000 Bytes/second

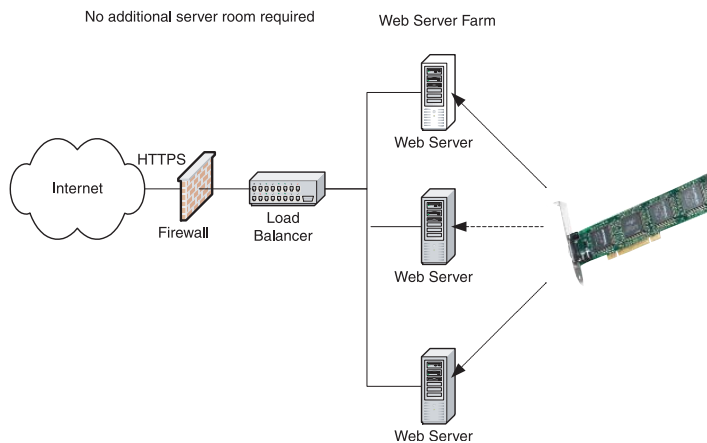
Regulatory Standards Certification

- U/L 94V-0 Flammability
- CE Compatibility
- FCC Part 15 – Class B

Export

- Exportable internationally for approved customers and applications

Internal Web Server Accelerators



www.rainbow.com

Corporate: 50 Technology Drive, Irvine, CA 92618 USA
Tel: +1 949 450 7300 or +1 800 852 8569 eMail: sales@rainbow.com

Australia
Tel: +61 3 9882 8322
<http://au.rainbow.com>

Brazil
Tel: +55 11 6121 6455
<http://www.rainbow.com/brasil>

China
Tel: +86 10 8851 9191
<http://cn.rainbow.com>

France
Tel: +33 1 41 43 29 00
<http://www.fr.rainbow.com>

Germany
Tel: +49 18 03 72 46 26 9
<http://www.de.rainbow.com>

Hong Kong
Tel: +852 3157 7111
<http://www.rainbow.com>

India
Tel: +91 11 26917538
<http://www.rainbowindia.co.in>

Japan
Tel: +81 3 5719 2731
<http://jp.rainbow.com>

Korea
Tel: +82 31 705 8212
<http://kr.rainbow.com>

Mexico
Tel: +52 55 5575 1441
<http://www.rainbow.com/mexico>

Singapore
Tel: +65 6274 2794
<http://www.rainbow.com>

Taiwan
Tel: +886 2 6630 9388
<http://tw.rainbow.com>

UK
Tel: +44 1932 579200
<http://www.uk.rainbow.com>

Distributors and resellers located worldwide.