

NetSwift™ 2012

Security Protocol Acceleration Appliance

SECURE NETWORK PERFORMANCE



NetSwift™ 2012

Line speed security protocol acceleration in an easy-to-deploy appliance solution.

The Rainbow NetSwift2012 enables financial institutions, enterprises, hosting centers, healthcare providers, and insurance companies to add the security of SSL to Web servers without sacrificing server performance or paying a high cost for installation and integration. This first in a new family of high-performance appliances from Rainbow Technologies incorporates both high-speed acceleration and termination of SSL for Web servers into a plug-and-play solution. The NetSwift2012 can be installed and configured in minutes and provides the fastest SSL transaction performance available, completely filling a 100 BaseT line with SSL traffic using realworld Web pages.

Key Features:

- Drop-in solution for securing and accelerating Web servers with SSL without modifying existing server hardware and software
- Fastest proven SSL acceleration on the market, providing up to 1,000 transactions per second and can saturate a 100 BaseT Ethernet line with SSL traffic
- Easily installs with or without a Layer 7 Load Balancer
- Secures multiple domains and multiple server certificates, supporting up to 256 keys and certificates
- Simplified configuration using an SSL-enabled Web browser or serial connection
- Increased performance and fault tolerance with multiple NetSwift2012 units
- Easy remote management using SNMP and Web browsers

The NetSwift2012 is installed quickly and easily with existing network infrastructure between the firewall and server and allows currently unsecured Web sites a cost-effective, plug-and-play way to add the security of SSL without the complex configuration and performance problems encountered by enabling these protocols inside the Web server.

“2001 Editor’s Choice”

– Communication News, November 2001



Specification

Performance

- Fills a 100 BaseT Ethernet line with SSL
- Up to 1,000 transactions per second
- Up to 10,000 concurrent sessions
- Multiple units can be used to increase performance

Management

- Supports multiple domains with up to 256 keys and certificates
- Configure remotely with SSL enabled Web browsers
- Configure locally with serial connection
- SNMP support
- Front panel LCD status screen

Network Interfaces

- 10/100/1000 mbps Ethernet connections

Network Configuration

- Inline transparent mode
- Proxy mode

Supported Security Protocols

- SSLv2, SSLv3, and TLSv1

Supported Algorithms

- RSA, DSA, DH, RC2, RC4, RC5, DES, 3DES, SHA1, and MD5

Fault Tolerance

- Multiple units can be used for redundancy
- Hardware bypass switch ensures no downtime

Physical Specifications

- 2U rack mountable chassis
- Dimensions:
Width 17 inches (431.8 mm)
Depth 24 inches (609.9 mm)
Height 1.721 inches (88.1 mm)

Power Requirements

- Power Rating: 400W
- Power Consumption: 325W (maximum)
- 115V/15A and 220V/15A

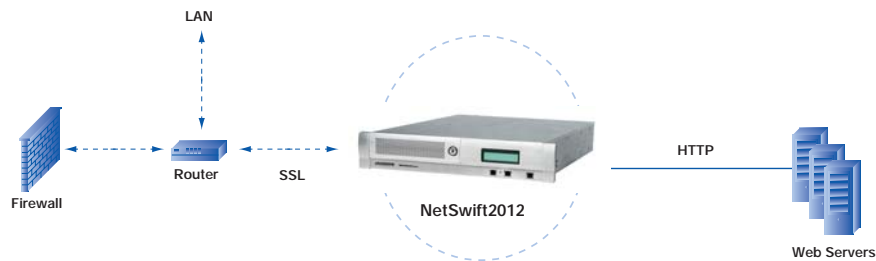
Agency Certifications

- FCC Class A
- UL
- CE

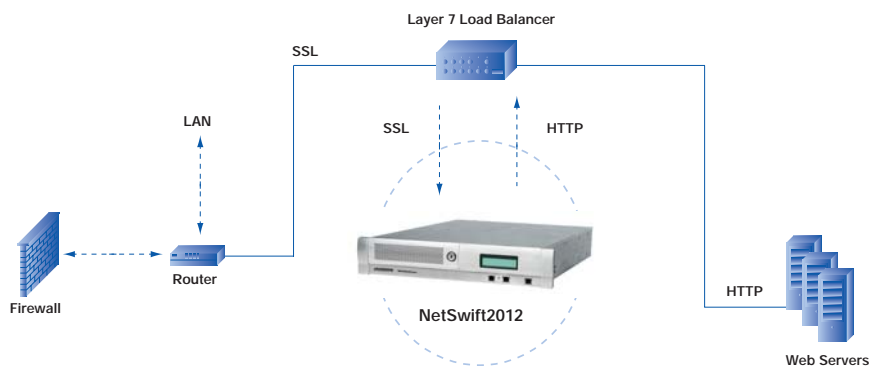
Operating Environment

- 32° to 95° F (0° to 35° C)

Typical installation without a load balancer:



Typical installation with a Layer 7 Load Balancer:



www.rainbow.com

Corporate: 50 Technology Drive, Irvine, CA 92618 USA

Tel: +1 949 450 7300 or +1 800 852 8569 eMail: sales@rainbow.com

Australia
Tel: +61 3 9882 8322
<http://au.rainbow.com>

Brazil
Tel: +55 11 6121 6455
<http://www.rainbow.com/brasil>

China
Tel: +86 10 8851 9191
<http://cn.rainbow.com>

France
Tel: +33 1 41 43 29 00
<http://www.fr.rainbow.com>

Germany
Tel: +49 18 03 72 46 26 9
<http://www.de.rainbow.com>

Hong Kong
Tel: +852 3157 7111
<http://www.rainbow.com>

India
Tel: +91 11 26917538
<http://www.rainbowindia.co.in>

Japan
Tel: +81 3 5719 2731
<http://jp.rainbow.com>

Korea
Tel: +82 31 705 8212
<http://kr.rainbow.com>

Mexico
Tel: +52 55 5575 1441
<http://www.rainbow.com/mexico>

Singapore
Tel: +65 6274 2794
<http://www.rainbow.com>

Taiwan
Tel: +886 2 6630 9388
<http://tw.rainbow.com>

UK
Tel: +44 1932 579200
<http://www.uk.rainbow.com>

Distributors and resellers located worldwide.

Making Security Simple